














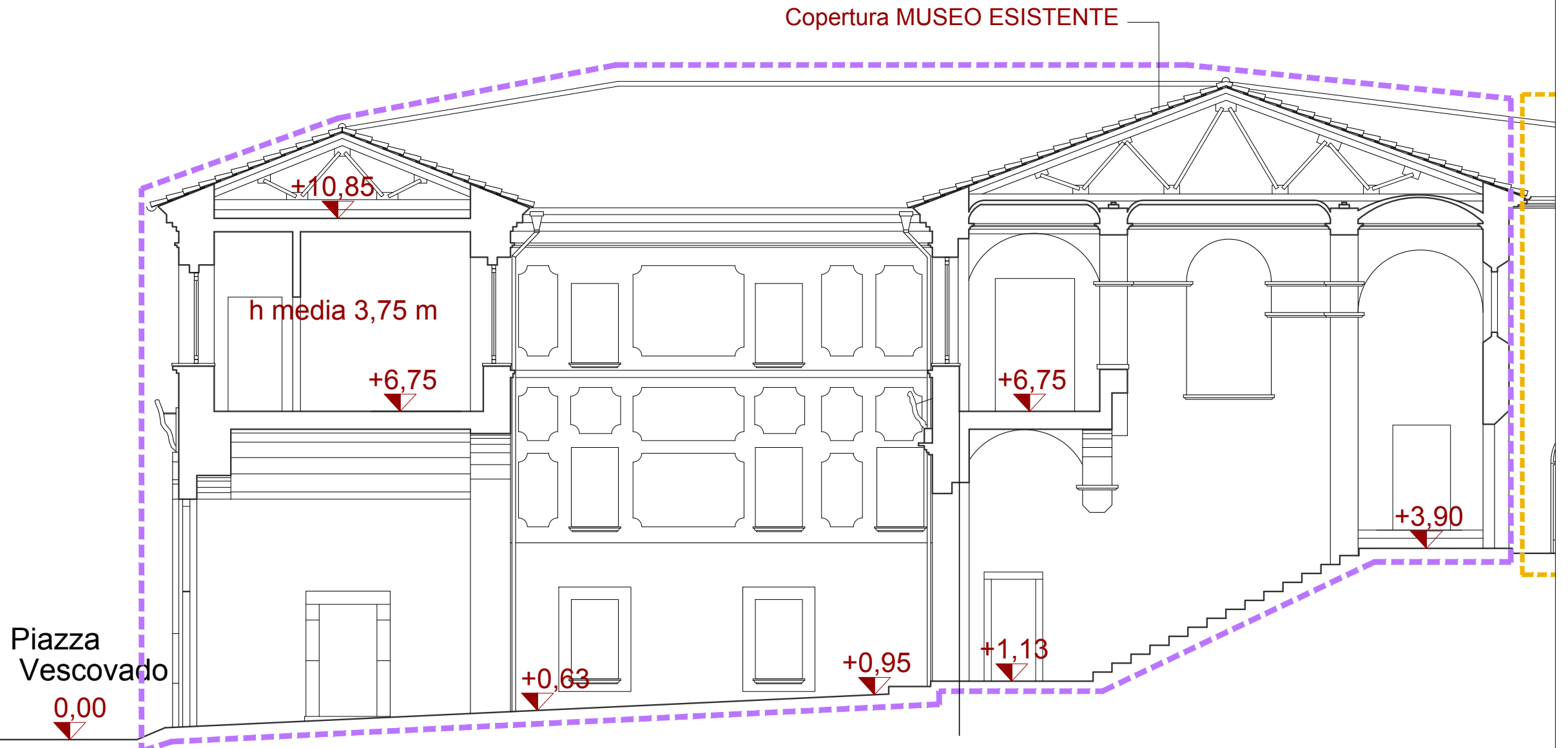




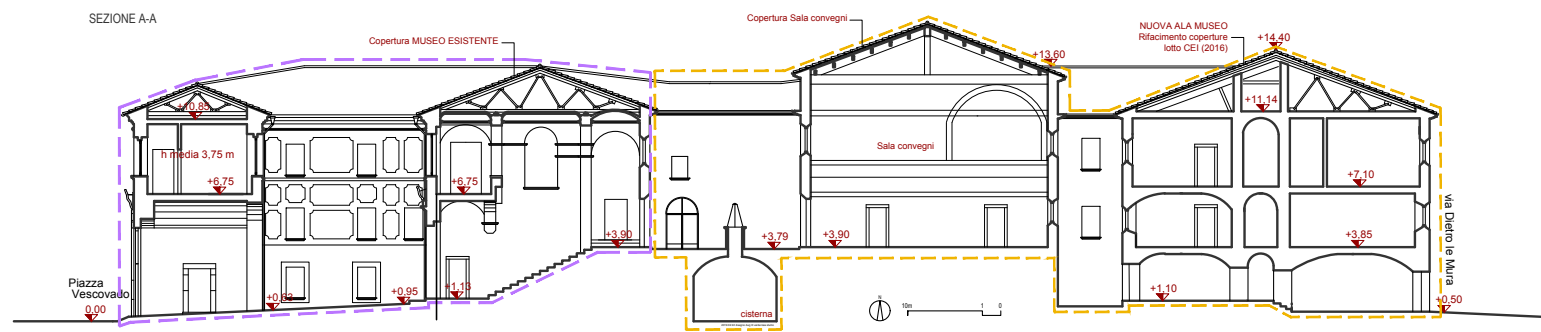
LEGENDA SEGNI GRAFICI

-  QUADRO ELETTRICO
-  CONTATORE ENERGIA ELETTRICA
-  DORSALI PRINCIPALI
-  INTERRUTTORE COMANDO LUCI
-  CENTRO LUCE
-  PUNTO PRESA BIVALENTE
-  DOPPIO PUNTO PRESA BIVALENTE
-  PULSANTE CON TIRANTE E SUONERIA
-  LAMPADA EMERGENZA 60 "
-  RILEVATORE DI PRESENZA
-  ALLARME
-  SIRENA DA INTERNO
-  SIRENA DA ESTERNO
-  TELECAMERA
-  PRESA RJ45

SEZIONE A-A



-  ex Seminario Arcivescovile
NUOVA ALA MUSEO
-  ex Palazzo Vescovile
MUSEO ESISTENTE



MUSEO e ARCHIVIO STORICO DIOCESANO
INSULA EPISCOPALE di NUSCO - Cittadella Museale - Rete Musei Campania

Comune di Nusco (Av) ente beneficiario finale
ARCIDIOCESI di SANT'ANGELO dei LOMBARDI ente concedente
Soprintendenza ABAP di Salerno ed Avellino alta sorveglianza

PROGETTO ESECUTIVO

Supervisione artistica e museografica, committente Arcidiocesi, Mons. Tarosio Luigi Gambalunga
Direttore dell'Ufficio Beni Culturali
Responsabile unico del procedimento, committente Arcidiocesi, geom. Luigi D'Angelis
Direttore dell'Ufficio Tecnico Diocesano
Progettista responsabile per la committente Arcidiocesi, fase di progettazione definitiva, arch. Lucia Turri
Consulenza e progettazione definitiva
allestimento e museografia nuova ala museo, arch. Lucia Turri
completamento e museografia museo esistente, arch. Angelo Verderosa
computi e disegni tecnico-prestazionali, arch. Antonio Resca
verifiche, consolidamenti statici e strutture, ing. Luciano De Mita
impianti climatizzazione e idrico-fognari, ing. Flaminio Mazzariello
impianti elettrici e opere correlate, ing. Enrico De Mita
giovani professionisti: dott. in arch. Maria Bovio / arch. Isabella Petecca / arch. Benedetta Verderosa
consulente per il restauro delle opere artistiche, Margherita Gramaglia
responsabile dell'elaborato: arch. Angelo Verderosa / arch. Benedetta Verderosa

IMP.E3.4

Sezione

Settore elaborato
Titolo elaborato
Verificato da: Ufficio Tecnico Diocesano, I.R.U.P.